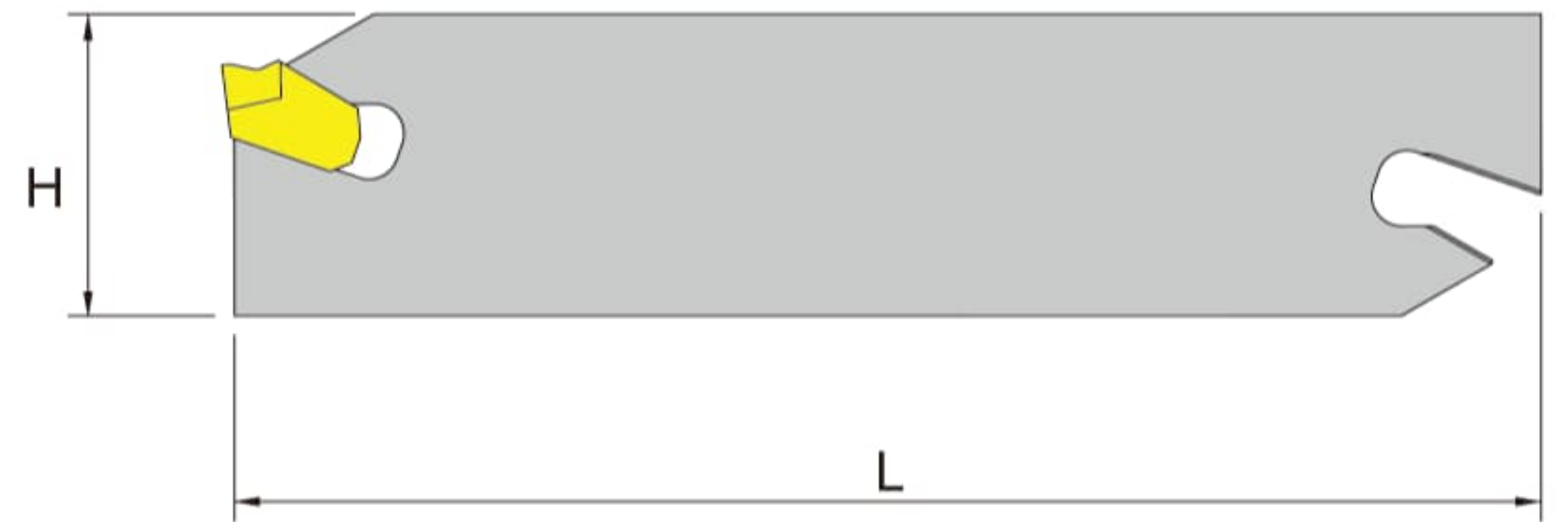
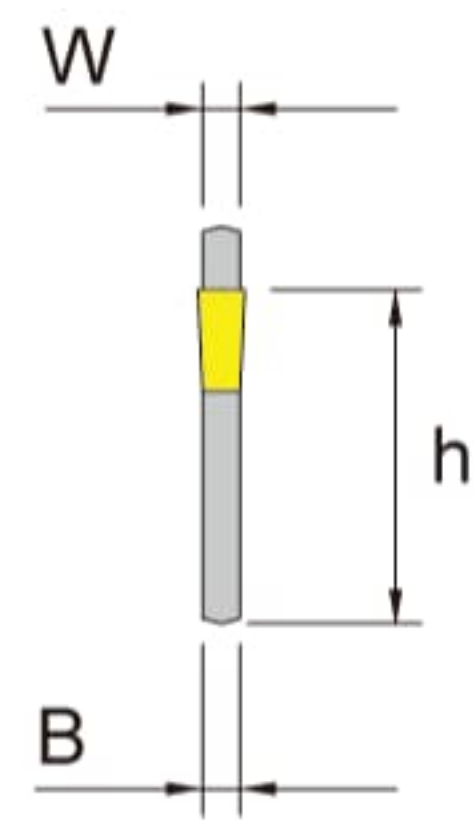
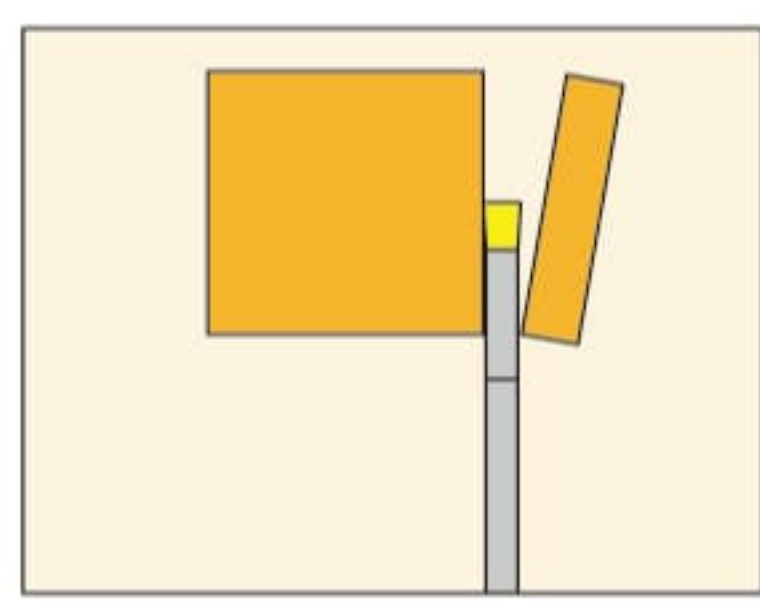


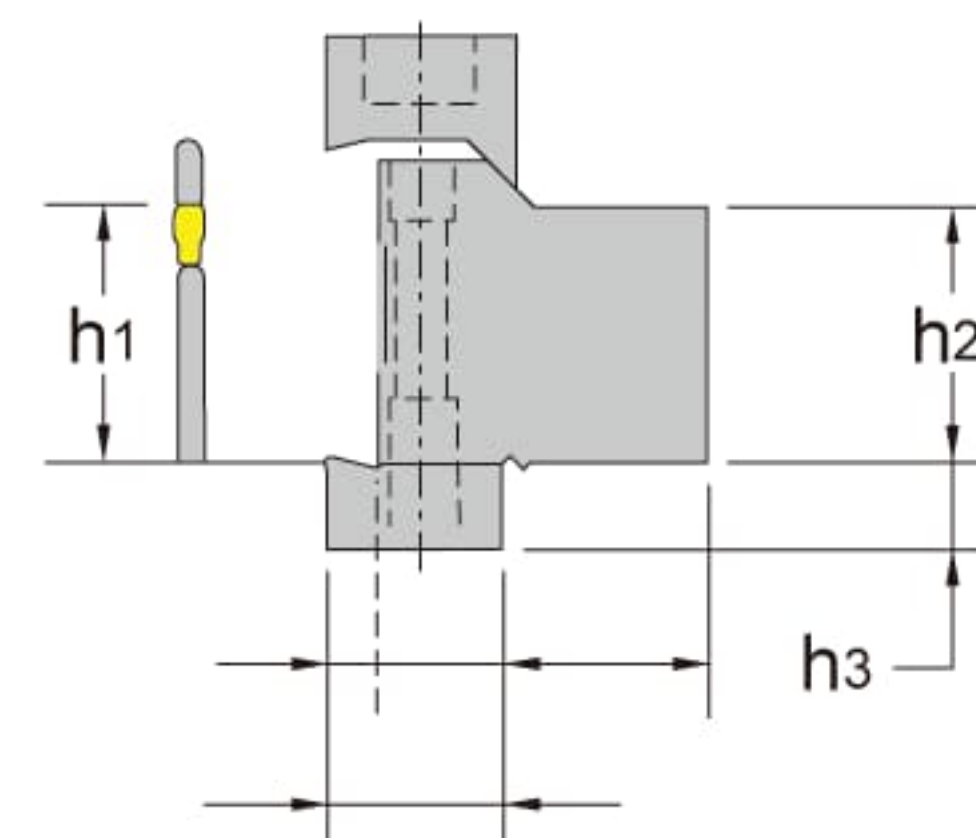
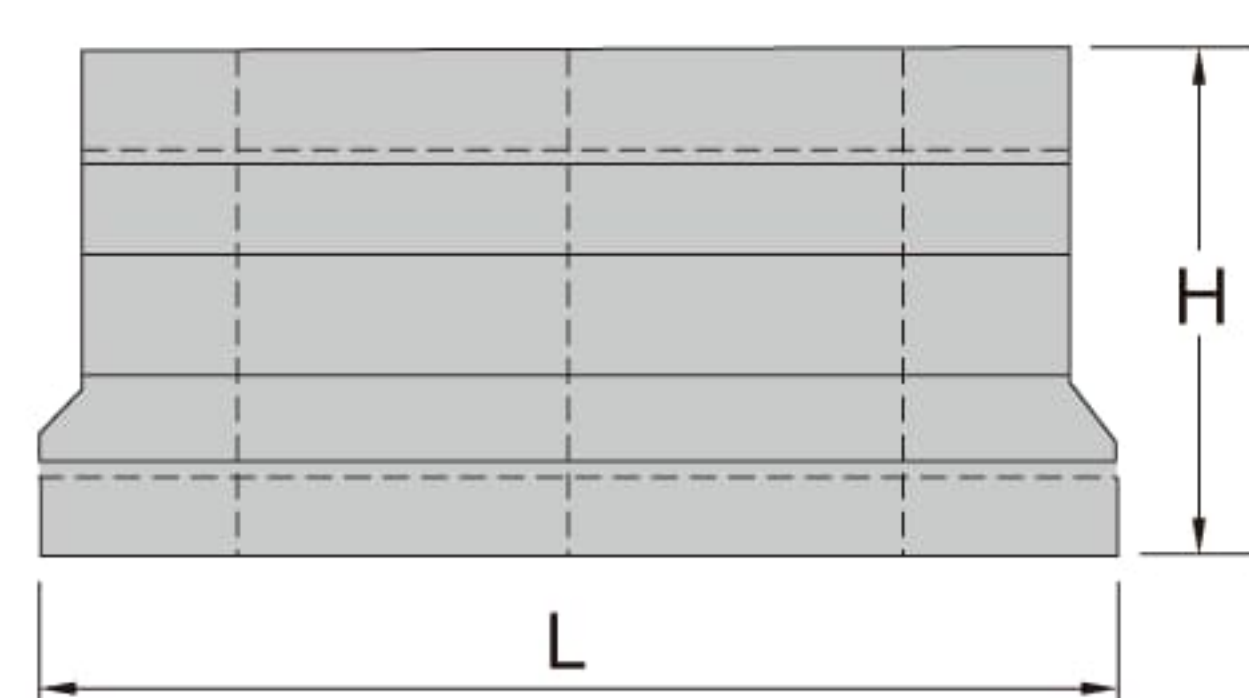
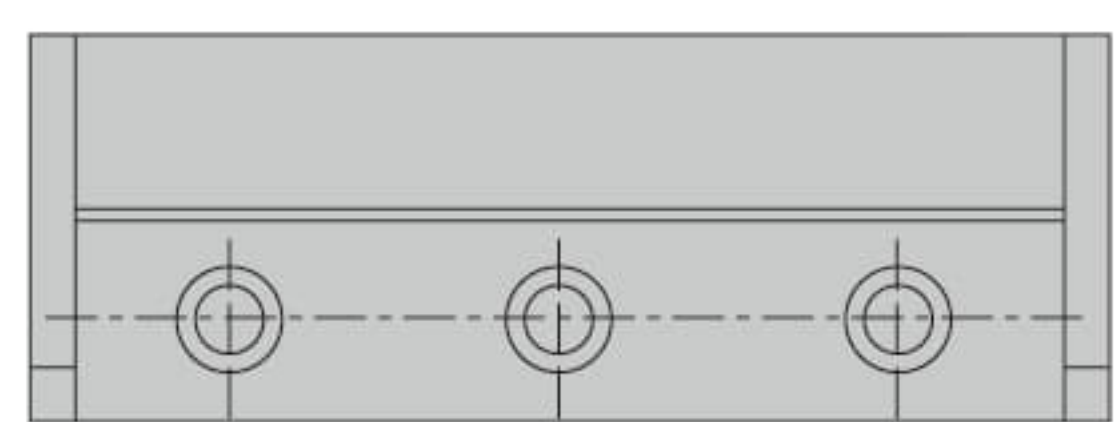
**Parting Off** 切斷刀板



**C**

| Order number | Insert number    | MAX. DIA. | Dimensions (mm) |     |    |     |    | Wrench |
|--------------|------------------|-----------|-----------------|-----|----|-----|----|--------|
|              |                  |           | W               | B   | h  | L   | H  |        |
| SGFH 26-3    | GFN3             | 75        | 3               | 2.4 | 21 | 110 | 26 | SL-1   |
| SGFH 32-3    |                  | 100       |                 |     | 25 | 150 | 32 |        |
| SGIH 26-2    | GTN2             | 75        | 2               | 1.6 | 21 | 110 | 26 |        |
| SGIH 26-3    | GTN3             | 75        | 3               | 2.4 | 21 | 110 | 26 |        |
| SGIH 32-3    |                  | 100       |                 |     | 25 | 150 | 32 |        |
| KTKB 26-3    | TKN3             | 75        | 3               | 2.4 | 21 | 110 | 26 |        |
| KTKB 32-3    |                  | 100       |                 |     | 25 | 150 | 32 |        |
| SV 26-3      | N151.2-300-4E    | 75        | 3               | 2.4 | 21 | 110 | 26 |        |
| SV 32-3      |                  | 100       |                 |     | 25 | 150 | 32 |        |
| SGTF 26-3    | WCFN3            | 75        | 3               | 2.4 | 21 | 110 | 26 |        |
| SGTF 32-3    |                  | 100       |                 |     | 25 | 150 | 32 |        |
| UGHN 26-2    | KGT $\odot\odot$ | 50        | 2               | 1.6 | 21 | 110 | 26 |        |
| UGHN 26-3    |                  | 75        | 3               | 2.4 |    |     |    |        |
| UGHN 26-4    |                  | 80        | 4               | 3.2 |    |     |    |        |
| UGHN 32-2    |                  | 50        | 2               | 1.6 | 25 | 150 | 32 |        |
| UGHN 32-3    |                  | 100       | 3               | 2.4 |    |     |    |        |
| UGHN 32-4    |                  | 100       | 4               | 3.2 |    |     |    |        |

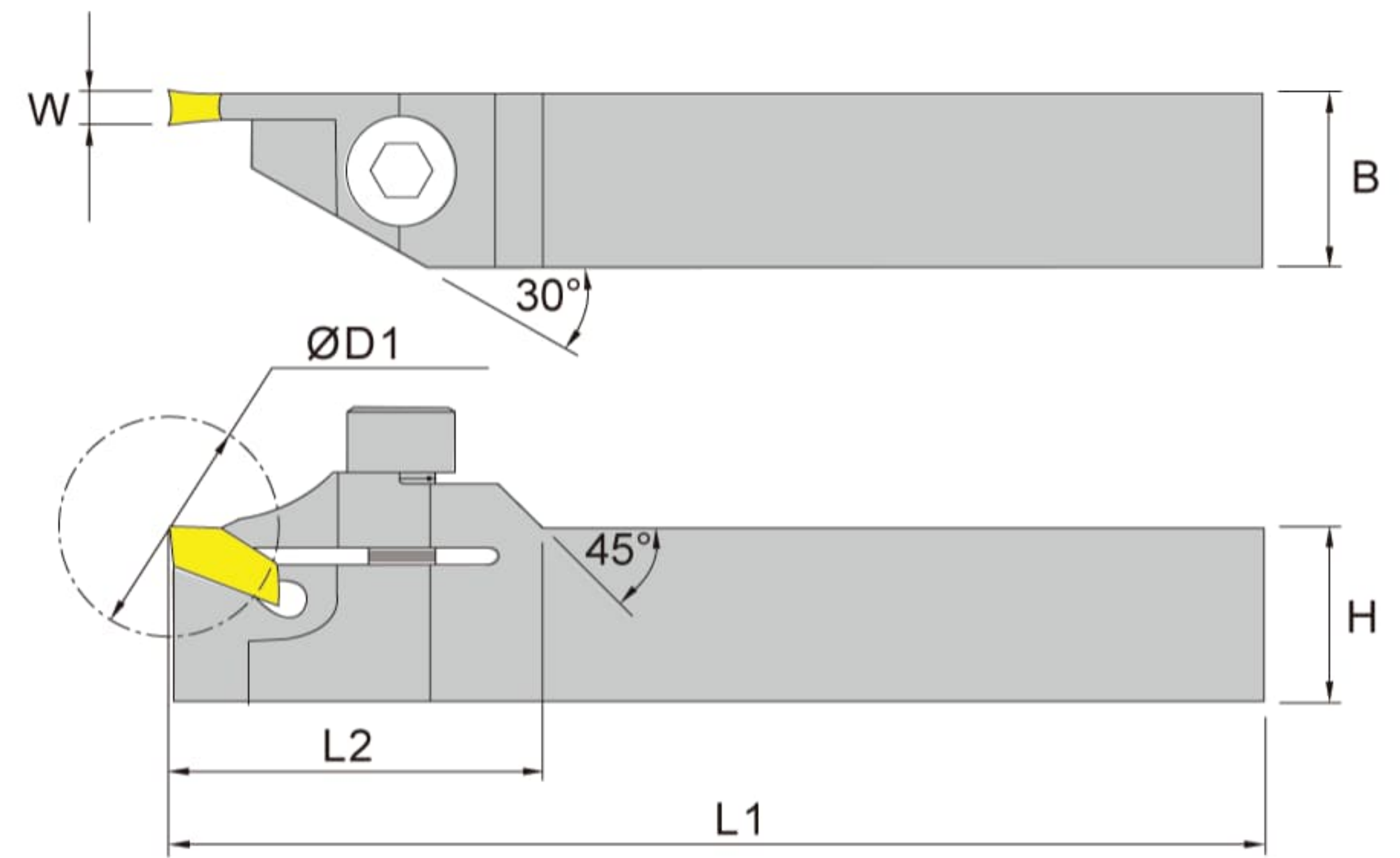
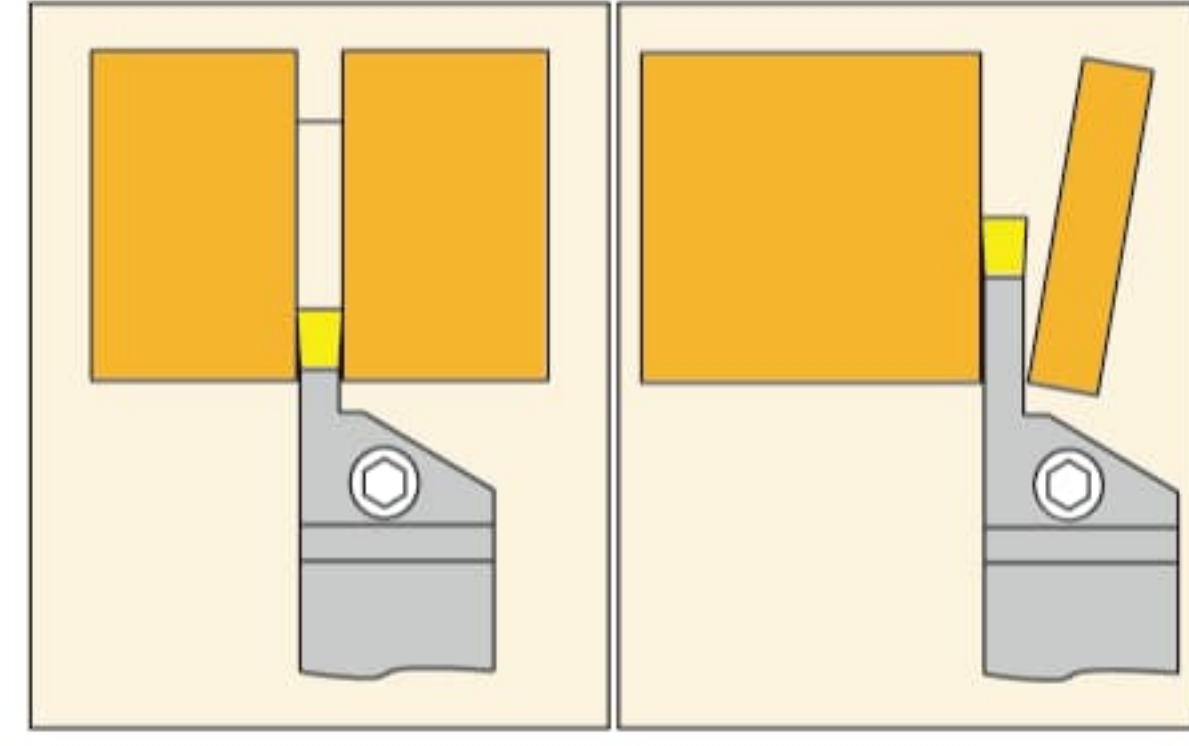
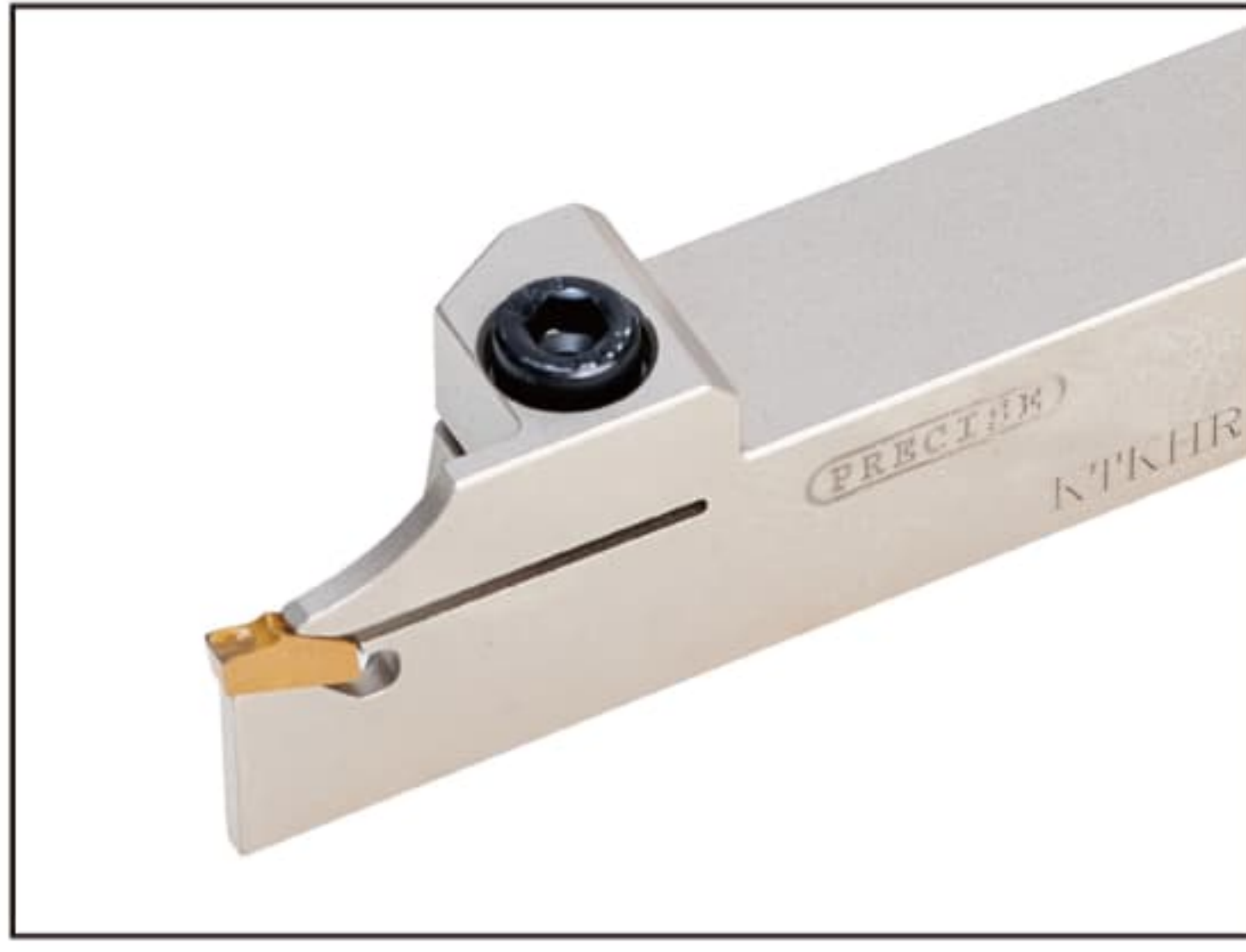
**Cutting Block** 切斷刀座



| Order number | h1 | h2 | h3   | H  | L   | Clamp  | Screw  | Wrench |
|--------------|----|----|------|----|-----|--------|--------|--------|
|              |    |    |      |    |     |        | BX0620 | LH-050 |
| SBU 16-26    | 26 | 16 | 14   | 45 | 80  | BCS 15 | BX0620 | LH-050 |
| SBU 20-26    | 26 | 20 | 10   | 45 | 80  | BCS 15 |        |        |
| SBU 25-26    | 26 | 25 | 8    | 45 | 80  | BCS 15 |        |        |
| SBU 20-32    | 32 | 20 | 13.5 | 50 | 100 | BCS 20 |        |        |
| SBU 25-32    | 32 | 25 | 8.5  | 50 | 110 | BCS 25 |        |        |
| SBU 32-32    | 32 | 32 | 8    | 55 | 110 | BCS 32 |        |        |



## KTKH 切斷及切槽刀架

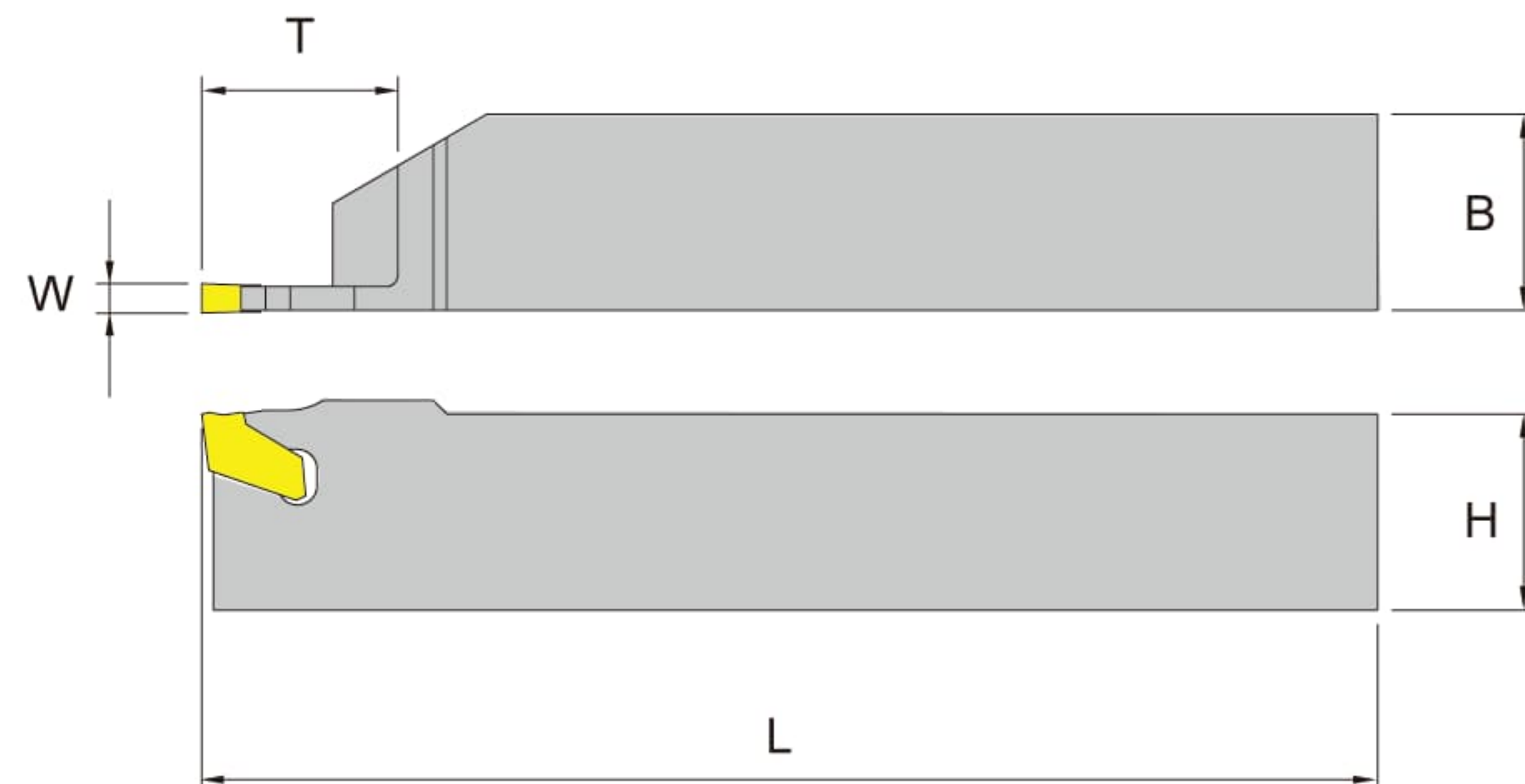
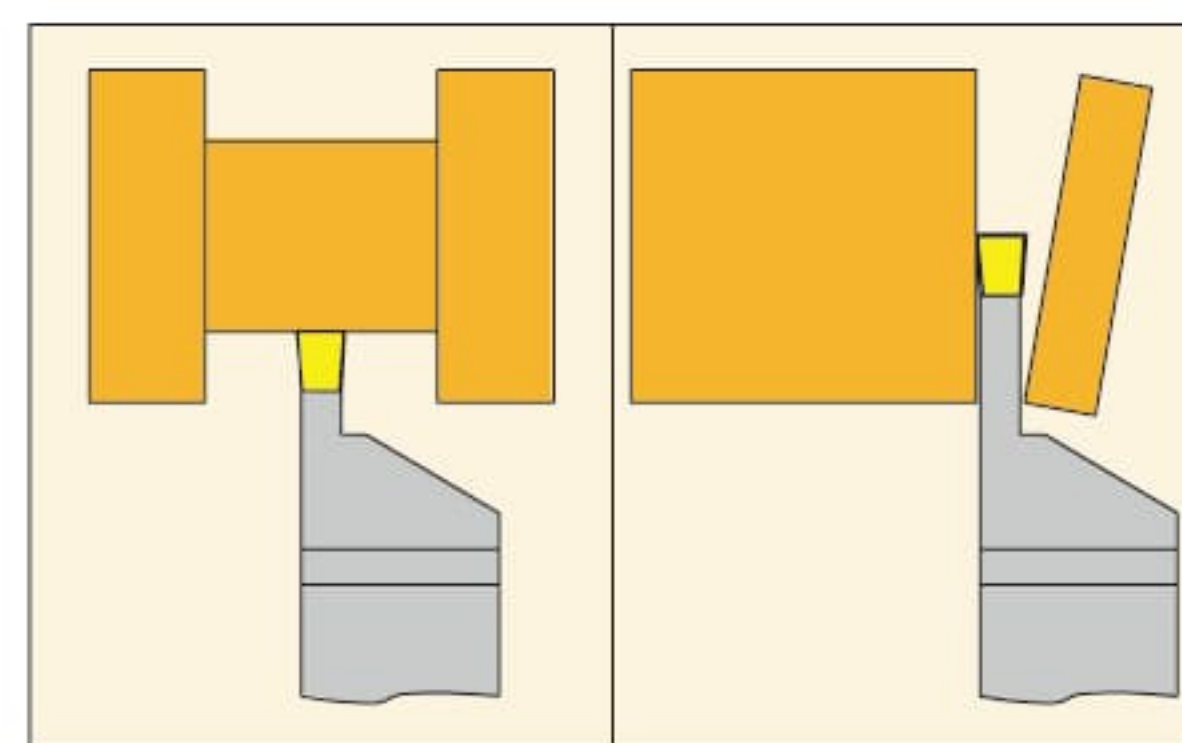


■ Right hand tool holder shown.(For Kyocera Insert)

| Order number    | Insert number | Dimensions (mm) |     |    |    |     |      | Screw    | Wrench |
|-----------------|---------------|-----------------|-----|----|----|-----|------|----------|--------|
|                 |               | D1              | W   | H  | B  | L1  | L2   |          |        |
| KTKHR/L 1010K-2 | TKN2          | 20              | 2.2 | 10 | 10 | 125 | 17.5 | BFTX0410 | TRX15  |
| 1212K-2         |               | 20              | 2.4 | 12 | 12 | 125 | 17.5 |          |        |
| 2020K-2         |               | 40              | 2.4 | 20 | 20 | 125 | 36   | BX0620   | LH-050 |
| 1616H-3         | TKN3          | 34              | 3.1 | 16 | 16 | 100 | 34   | BX0616   |        |
| 2020K-3         |               | 45              |     | 20 | 20 | 125 | 42   | BX0620   |        |
| 2525M-3         |               | 56              |     | 25 | 25 | 150 | 47   |          |        |
| 2020K-3S        |               | 30              |     | 20 | 20 | 125 | 36   |          |        |
| 2525M-3S        |               | 30              |     | 25 | 25 | 150 | 36   |          |        |
| 2525M-5S        | TKN5          | 40              | 5.0 | 25 | 25 | 150 | 36   |          |        |

C

## SGTFR 外徑及切斷刀架

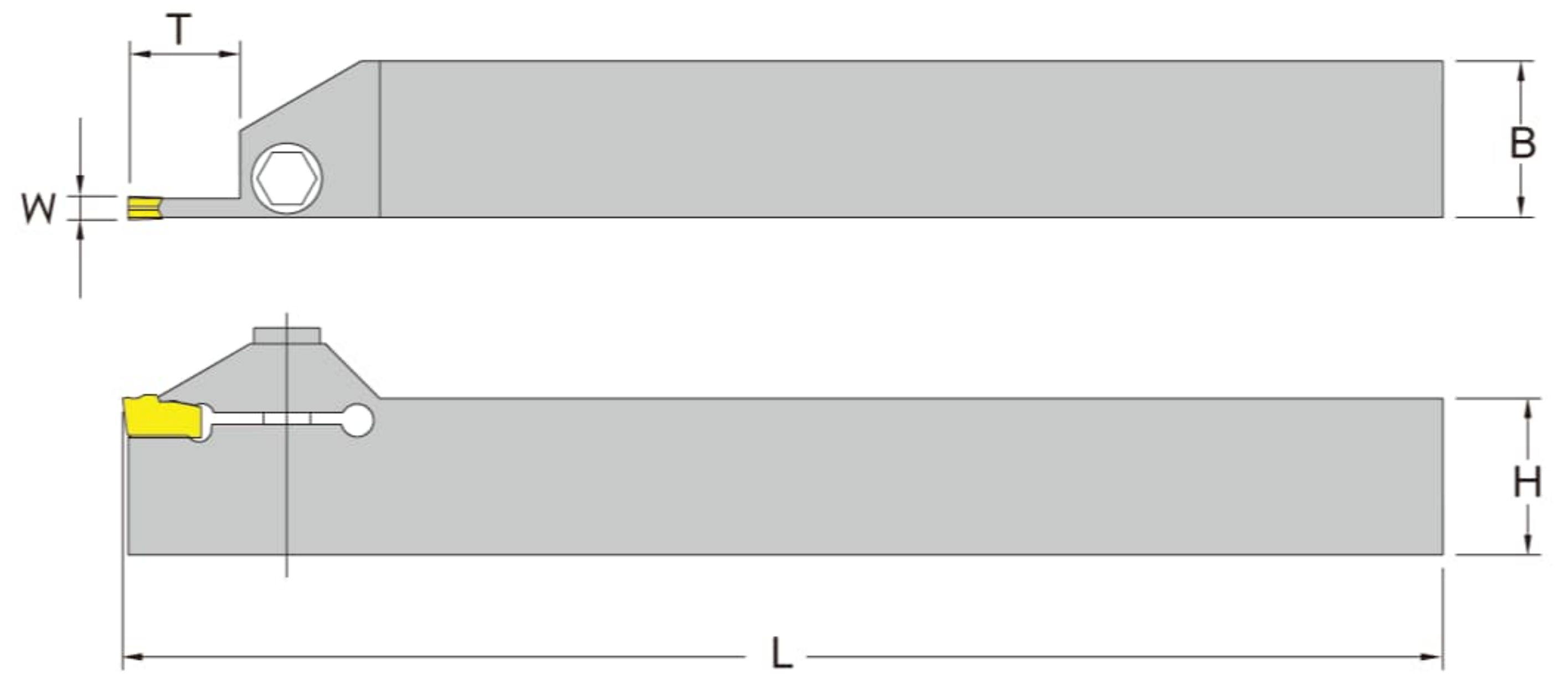
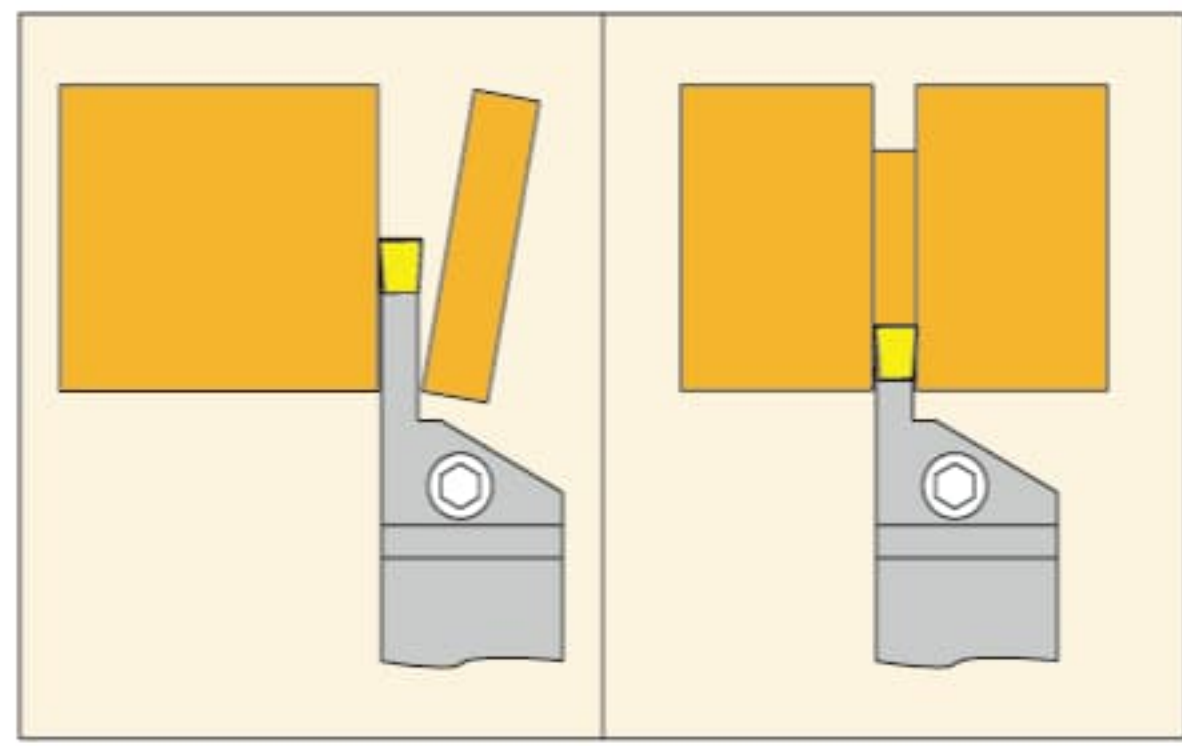
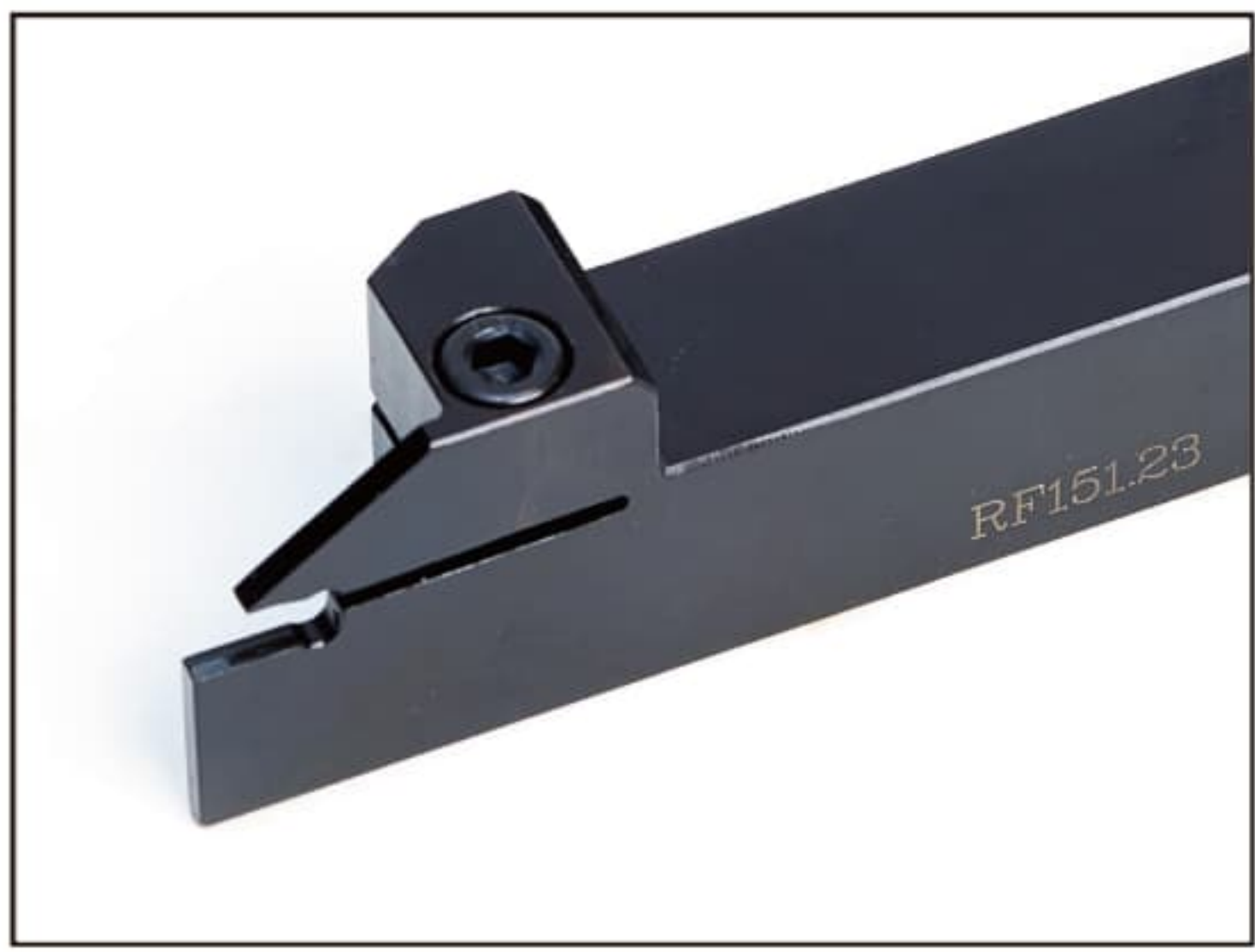


■ Right hand tool holder shown.(For Iscar Insert)

| Order number     | Insert number | Dimensions (mm) |    |     |    |     | Screw | Wrench |
|------------------|---------------|-----------------|----|-----|----|-----|-------|--------|
|                  |               | H               | B  | L   | T  | W   |       |        |
| SGTFR 2020K-3T26 | GFN-3         | 20              | 20 | 125 | 26 | 3.0 | —     | SL-1   |
| 2525M-3T26       | GFR/L-3       | 25              | 25 | 150 | 26 |     |       |        |
| 2020K-4T28       | GFN-4         | 20              | 20 | 125 | 28 | 4.0 | —     |        |
| 2525M-4T32       | GFR/L-4       | 25              | 25 | 150 | 32 |     |       |        |



**R/LF151.23** 外徑切斷刀架

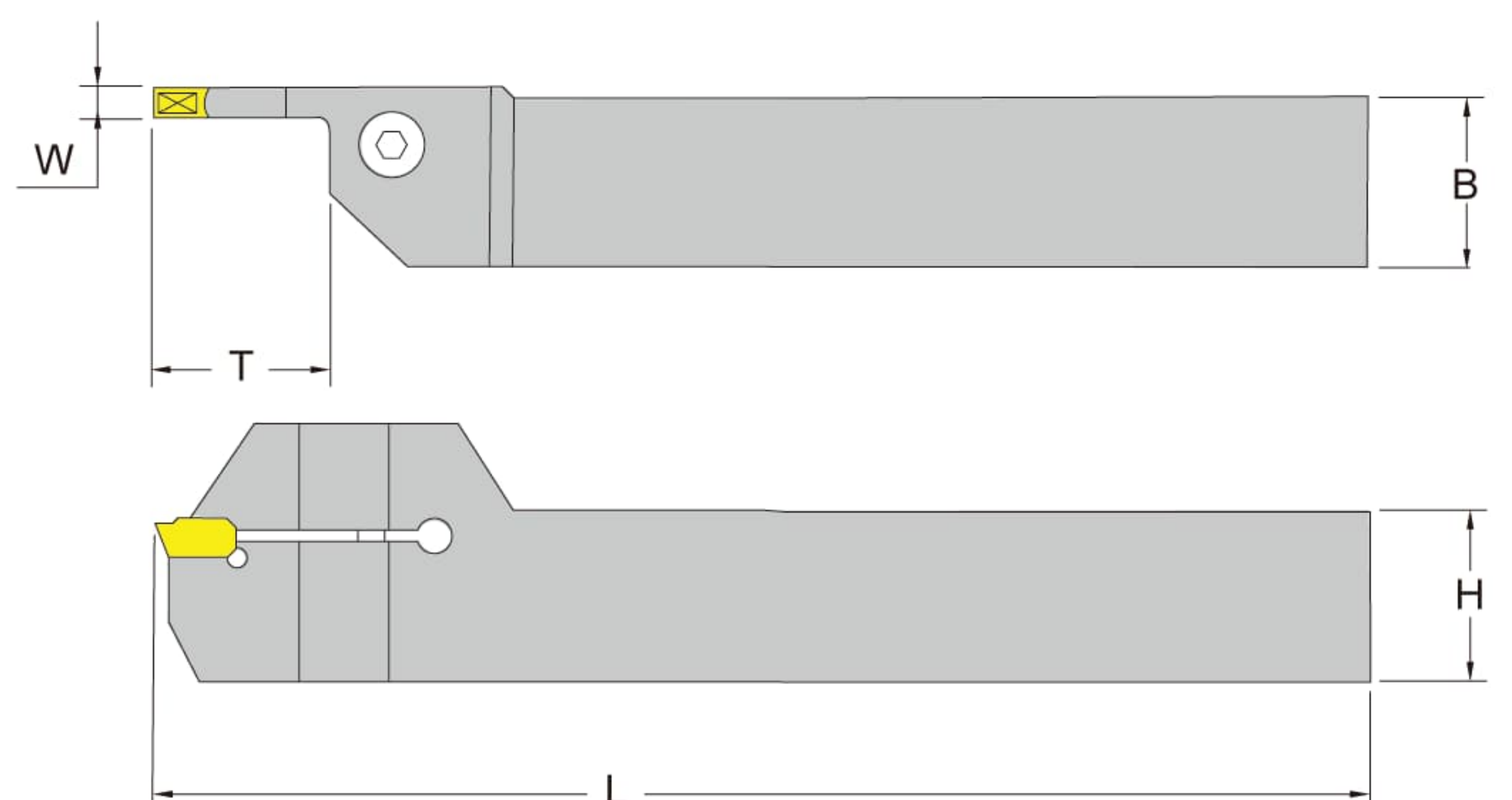
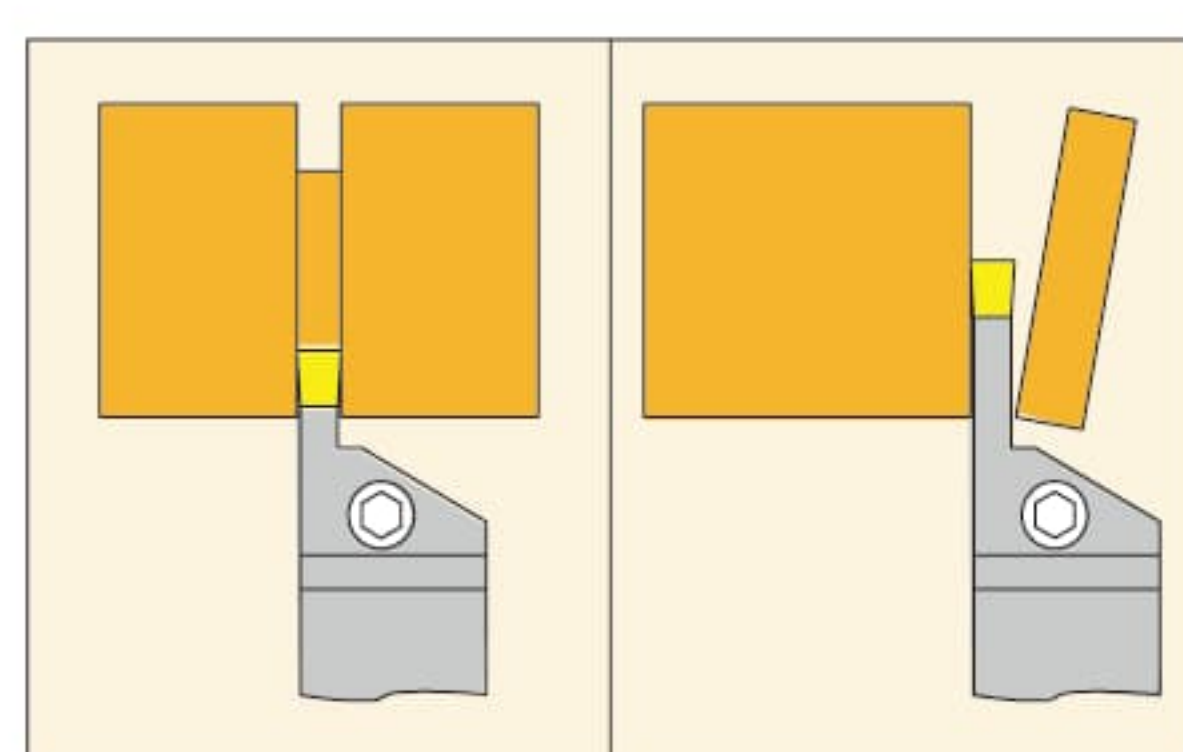


■ Right hand tool holder shown.(For Sandvik Insert)

C

| Order number        | Insert number    | Dimensions (mm) |    |     |    |     | Screw  | Wrench |
|---------------------|------------------|-----------------|----|-----|----|-----|--------|--------|
|                     |                  | H               | B  | L   | T  | W   |        |        |
| RF151.23 2020K-3020 | N151.2<br>300-4E | 20              | 20 | 125 | 20 | 3.0 | BX0520 | LH-040 |
| LF151.23 2020K-3020 |                  |                 |    |     |    | 4.0 |        |        |
| RF151.23 2020K-4020 | N151.2<br>400-4E | 25              | 25 | 150 | 20 | 3.0 |        |        |
| LF151.23 2020K-4020 |                  |                 |    |     |    | 4.0 |        |        |
| RF151.23 2525M-3020 | N151.2<br>300-4E | 25              | 25 | 150 | 20 | 3.0 |        |        |
| LF151.23 2525M-3020 |                  |                 |    |     |    | 4.0 |        |        |
| RF151.23 2525M-4020 | N151.2<br>400-4E | 25              | 25 | 150 | 20 | 3.0 |        |        |
| LF151.23 2525M-4020 |                  |                 |    |     |    | 4.0 |        |        |
| RF151.23 2525M-3025 | N151.2<br>300-4E | 25              | 25 | 150 | 25 | 3.0 |        |        |
| RF151.23 2525M-4025 |                  |                 |    |     |    | 3.0 |        |        |

**GHR** 外徑切斷刀架

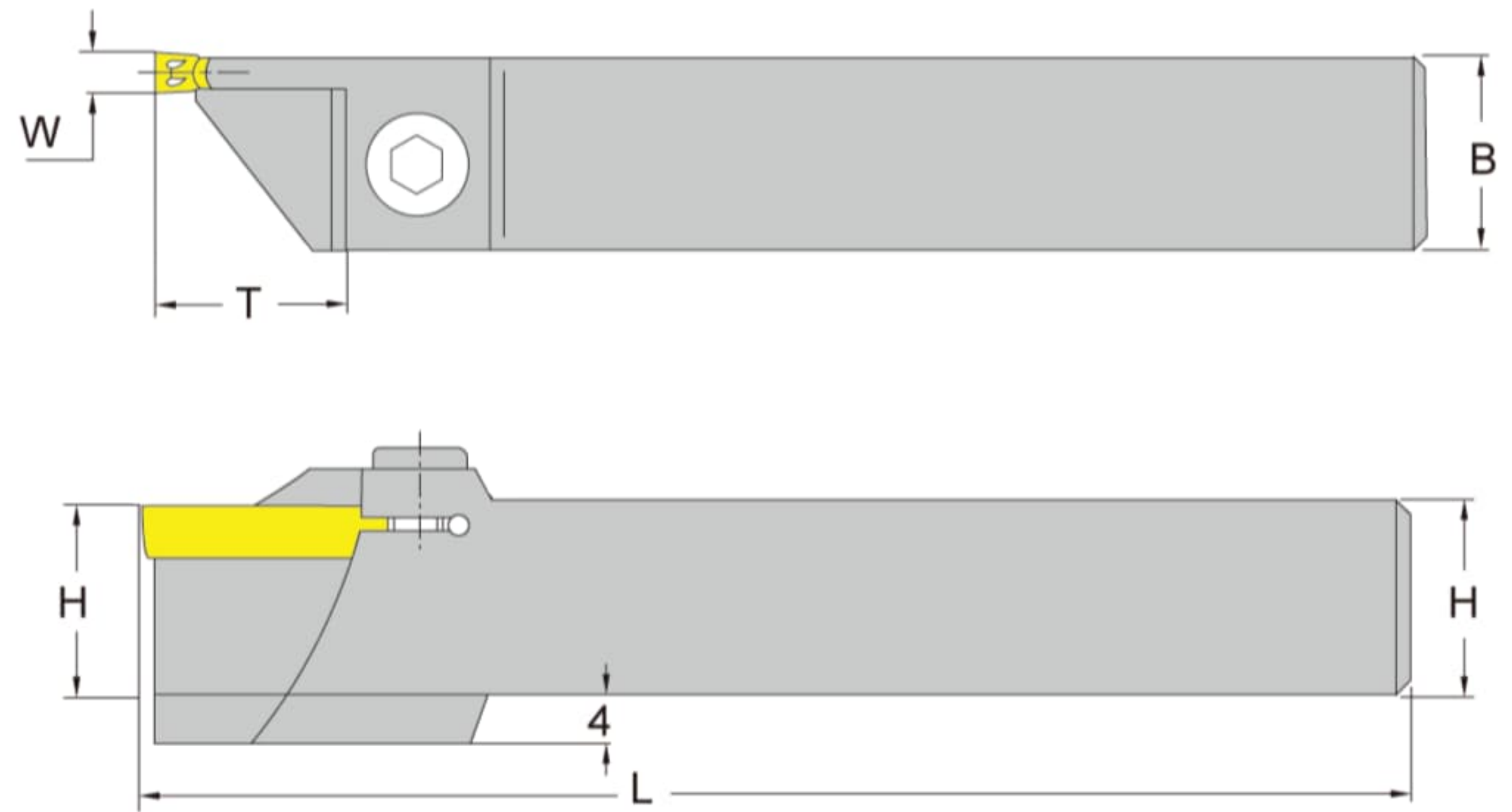
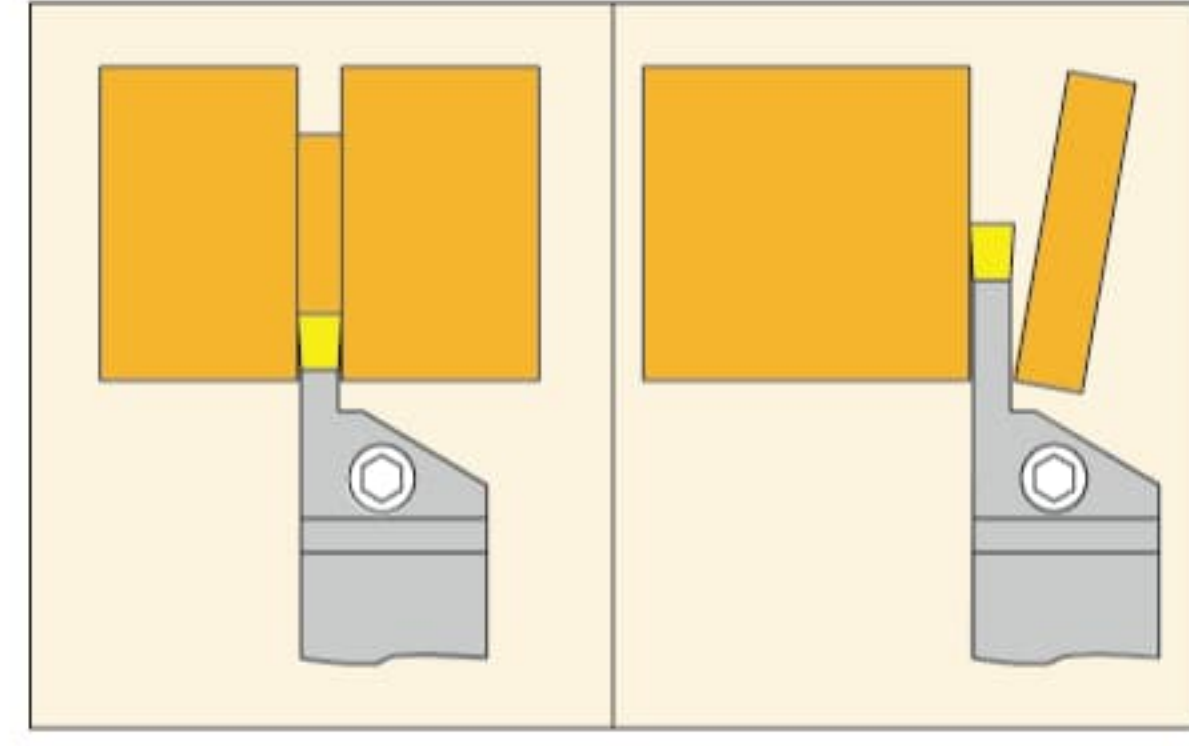


■ Right hand tool holder shown.(For Sumitomo Insert)

| Order number | Insert number         | Dimensions (mm) |    |    |     |    | Screw  | Wrench |
|--------------|-----------------------|-----------------|----|----|-----|----|--------|--------|
|              |                       | W               | H  | B  | L   | T  |        |        |
| GHR 2020K-3  | WCF $\circ$ 3 $\circ$ | 3               | 20 | 20 | 125 | 20 | BX0520 | LH-040 |
| GHR 2525M-3  |                       | 3               | 25 | 25 | 150 | 25 |        |        |



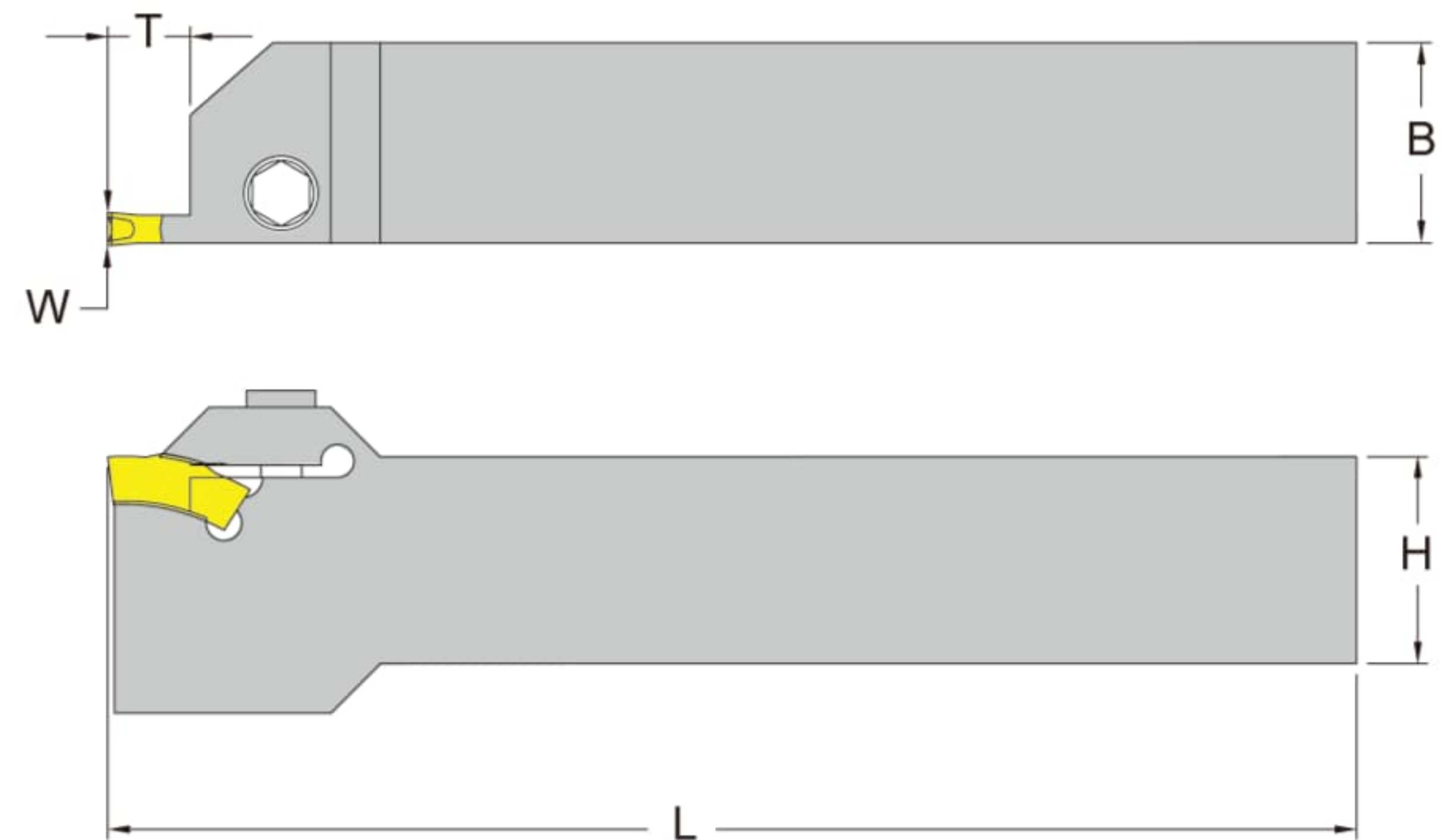
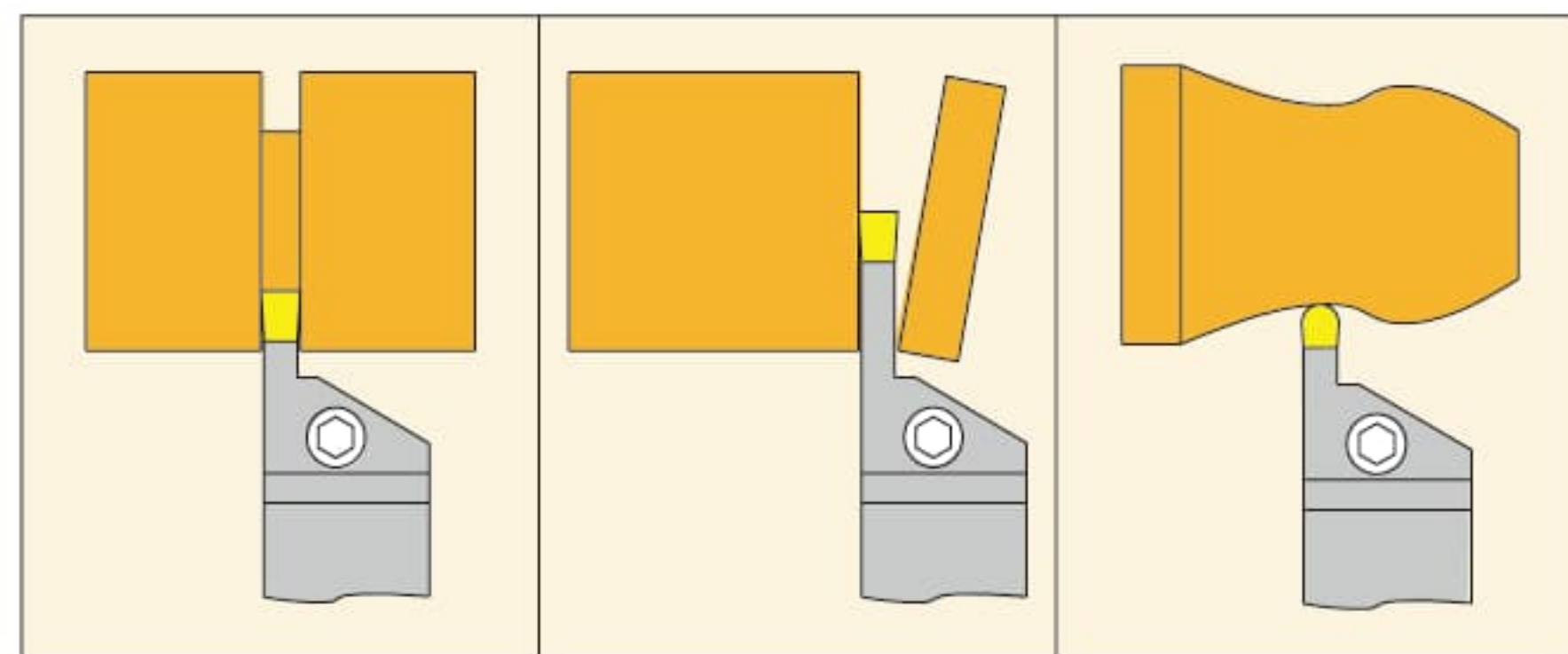
## DGTR/L 外徑切斷刀架



■ Right hand tool holder shown.(For Iscar Insert)

| Order number     | Insert number | Dimensions (mm) |    |    |     |      | Screw    | Wrench |
|------------------|---------------|-----------------|----|----|-----|------|----------|--------|
|                  |               | W               | H  | B  | L   | T    |          |        |
| DGTR/L 10B-2D-30 | DGN           | 2               | 10 | 10 | 125 | 15   | BX0516   | LH-040 |
| 12B-2D-30        |               |                 | 12 | 12 |     | 12   | BFTX0410 | TRX15  |
| 12B-2D-24SH      |               | 3               | 16 | 16 | 125 | 16   | BX0516   | LH-040 |
| 12B-3D-24SH      |               |                 |    |    |     | 17.5 |          |        |
| 16B-2D-32        |               | 2               | 20 | 20 | 125 | 20   | BX0520   |        |
| 16B-3D-35        |               | 3               |    |    |     |      |          |        |
| 20B-2D-35        |               | 2               | 25 | 25 | 150 | 17.5 | BX0520   |        |
| 20B-3D-40        |               | 3               |    |    |     | 20   |          |        |
| 25B-2D-35        |               | 2               | 25 | 25 | 150 | 17.5 | BX0520   |        |
| 25B-3D-40        |               | 3               |    |    |     | 20   |          |        |

## TGDR/L 外徑香蕉霸王刀



■ Right hand tool holder shown.(For Iscar Insert)

| Order number    | Insert number | Dimensions (mm) |    |    |     |      | Screw  | Wrench |
|-----------------|---------------|-----------------|----|----|-----|------|--------|--------|
|                 |               | W               | H  | B  | L   | T    |        |        |
| TGDR/L 1616H-3M | TGMF/P 3      | 3               | 16 | 16 | 100 | 7.5  | BX0516 | LH-040 |
| 2020K-3M        |               |                 | 20 | 20 | 125 |      |        |        |
| 2020K-4M        | TGMF/P 4      | 4               | 25 | 25 | 150 | 9.0  |        |        |
| 2525M-3M        | TGMF/P 3      | 3               |    |    |     | 7.5  |        |        |
| 2525M-4M        | TGMF/P 4      | 4               | 25 | 25 | 150 | 15.5 |        |        |
| 2525M-5M        | TGMF/P 5      | 5               |    |    |     | 18   |        |        |
| 2525M-6M        | TGMF/P 6      | 6               | 25 | 25 | 150 | 22   |        |        |